

## HOUSE 8 BEDROOMS 6 BATHROOMS IN MIJAS

Mijas

REF# R4979593 – 1.700.000€

8  
Beds

6  
Baths

500 m<sup>2</sup>  
Built

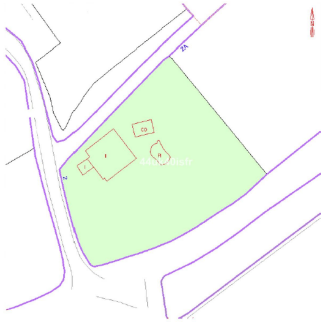
3863 m<sup>2</sup>  
Plot

150 m<sup>2</sup>  
Terrace

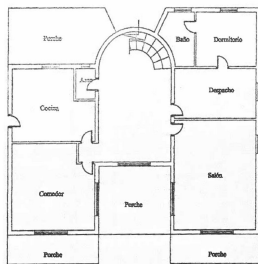
\*\*\*Villa Investment opportunity with lot's of potential in Mijas Pueblo\*\*\* "Discover an exceptional investment opportunity with this expansive 500 m<sup>2</sup> detached villa nestled on a sprawling 3,863 m<sup>2</sup> plot on the outskirts of charming Mijas Pueblo. This property offers not only a luxurious living space but also the potential to build additional villas or apartments, making it a savvy choice for investors. With stunning views of lush green trees, majestic mountains, and the sparkling sea, this villa promises a serene and private retreat. Boasting 8 spacious bedrooms and 6 bathrooms, this home is perfect for large families or as an Airbnb rental investment. The south-facing orientation ensures ample natural light throughout the day, while the terrace and balcony provide perfect spots for enjoying the breathtaking vistas. The villa is equipped with modern amenities, including built-in wardrobes, storage space, and heating with a cold/heat pump. Accessibility is a key feature, with adaptations for individuals with reduced mobility. The property also includes a garage space and boasts an impressive energy efficiency rating of B, ensuring both comfort and sustainability. Located close to public transport, this villa combines tranquility with convenience, making it an ideal choice for those seeking a private yet accessible haven. Don't miss out on this rare opportunity to own a piece of paradise with endless possibilities!" There is a possibility to build other villas or apartments on a 3863 m<sup>2</sup> plot The 500 m<sup>2</sup> built detached villa has the most stunning views of green trees, mountain view of Mijas and sea view from the second floor! The property located in a very private area of the



outskirts of Mijas Pueblo Ideal for Airbnb rental investment, close to public transport



planta I.



planta II.

