



TOWNHOUSE 3 BEDROOMS 2 BATHROOMS IN PUERTO BANÚS

Puerto Banús

REF# R4781017 – 650.000€

3
Beds

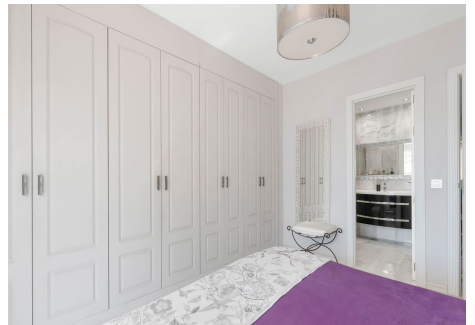
2
Baths

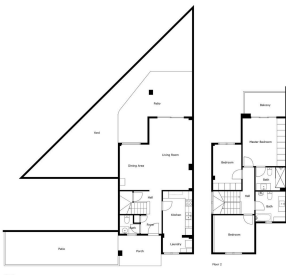
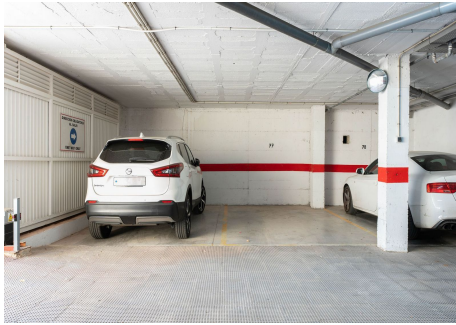
140 m²
Built

18 m²
Terrace

Welcome to this corner townhouse in Azalea Beach with an unbeatable location on the beachside between Puerto Banús and San Pedro de Alcántara! This cozy townhouse offers 3 bedrooms, 2 bathrooms and a guest toilet. By the entrance to the property you have a spacious private terrace, perfect for a chill out area with evening sun. As you enter the property, on the entrance level you will find a guest toilet, kitchen, living and dining room. From the living room you have access to the back terrace and garden area. On the upper level you will find 3 bedroom and 2 bathrooms. The master bedroom has an en-suite bathroom and a small terrace. The urbanization has beautiful gardens and 5 swimming pools. Garage included in the price. Welcome!

PROPERTIES
silversea





Measurements Calculated And Overlaid Highligth In A Red Line Color (Where)