



HOUSE 3 BEDROOMS 4 BATHROOMS IN BENALMADENA

Benalmadena

REF# R4709494 – 1.485.000€

3
Beds

4
Baths

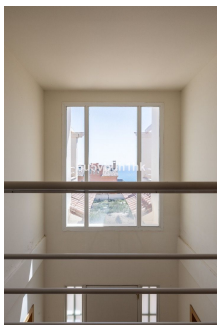
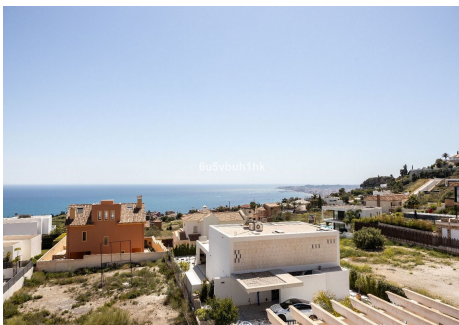
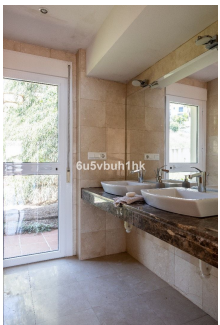
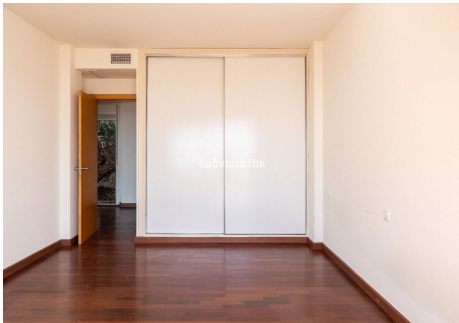
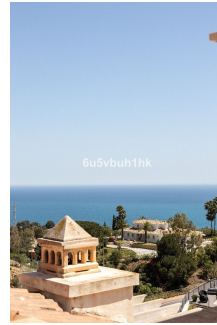
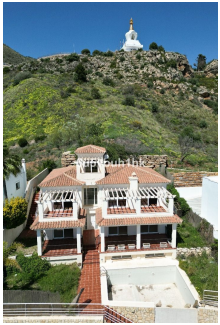
518 m²
Built

606 m²
Plot

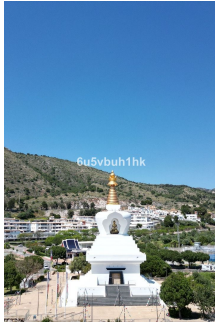
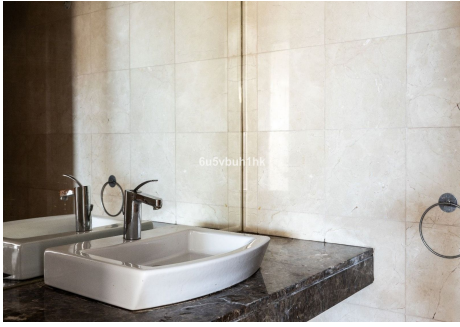
Welcome to your timeless sanctuary nestled near the serene Buddhist Stupa in Benalmadena, offering breathtaking panoramic views of the Mediterranean Sea and the majestic sight of the Buddhist Stupa. This meticulously crafted villa, constructed in 2013, presents a rare opportunity to embrace modern elegance in one of the most coveted locations on the Costa del Sol. Key Features: 3 bedrooms 4 bathrooms Swimming pool Closed garage accommodating up to 6 cars Terraces on all levels Abundant natural light and stunning views through glass openings on the ground floor Exclusive terraces for upper-floor bedrooms Elevator for convenience Spacious cinema room Step into this timeless villa where modern luxury meets coastal charm. The year of construction, 2013, speaks to the quality and craftsmanship that went into creating this architectural gem. Every corner exudes sophistication and comfort, providing an unparalleled lifestyle experience. The upper floors boast private terraces, offering intimate spaces to unwind and soak in the mesmerizing coastal scenery. With an elevator ensuring accessibility to every level, convenience is seamlessly woven into the fabric of this architectural masterpiece. Entertain guests in style or indulge in cinematic delights within the grand sala de cine, providing the perfect setting for memorable gatherings and relaxation. As featured in Forbes, Malaga has been recognized as the best city to live in, further emphasizing the desirability of this remarkable location. Don't miss the opportunity to make this exceptional

PROPERTIES silversea

villa your own retreat, where the timeless elegance of 2013 construction, the serenity of the surroundings, and the allure of coastal living converge to create an unparalleled lifestyle experience. Contact us today to schedule a viewing and embark on a journey towards owning your slice of paradise.







SIZES ARE APPROXIMATE, ACTUAL MAY VARY

