



## PENTHOUSE 2 BEDROOMS 2 BATHROOMS IN NEW GOLDEN MILE

New Golden Mile

**REF# R4670737 – 755.000€**

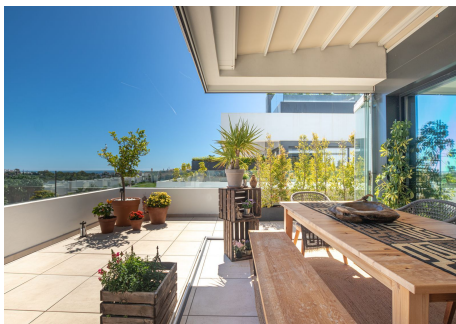
2	2	112 m <sup>2</sup>	154 m <sup>2</sup>
Beds	Baths	Built	Terrace

Penthouse on the New Golden Mile with beautiful sea views! Impeccable home that offers sun all day and enjoys breathtaking views to the sea, La Concha mountain and the stunning surrounding area from the main level and the solarium. The entrance floor consists of 2 bedrooms whereas one is an ensuite, open plan kitchen/ dining and living area with an extra high ceiling, a large wrap around terrace, that is partly covered with automatic awnings and glass curtains. The solarium is in 2 sections, one has an outdoor kitchen and the other a private salt water pool with plenty of space for sunbathing. The community has a gym, hamam, sauna and a Jacuzzi. 2 underground parking spaces and storage is included. El Campanario area is situated with a short stroll to a fantastic club house with a 9 hole golf course, tennis, pádel, a large indoor pool, spa, gym, restaurant and much more. There is a shopping centre just a couple of minutes' walk away with additional restaurants, coffee shops, pharmacy and everything you need in daily life. This is a very good location, next to 2 famous golf courses and only a few minutes drive to Puerto Banús or to Estepona. **MUST BE SEEN TO BE FULLY APPRECIATED!** Penthouse, New Golden Mile, Costa del Sol. 2 Bedrooms, 2 Bathrooms, Built 112 m<sup>2</sup>, Terrace 154 m<sup>2</sup>. Setting : Close To Golf, Close To Shops, Close To Sea, Close To Town, Close To Schools, Urbanisation. Orientation : North, East, South, West. Condition : Excellent. Pool : Communal, Private. Climate Control : Air Conditioning. Views : Sea, Mountain, Panoramic,



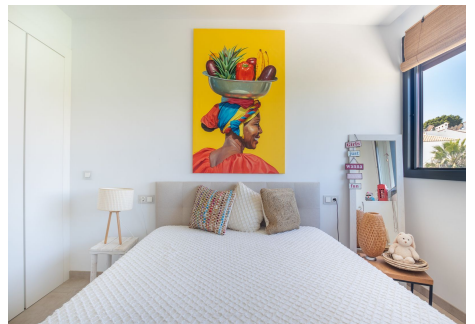
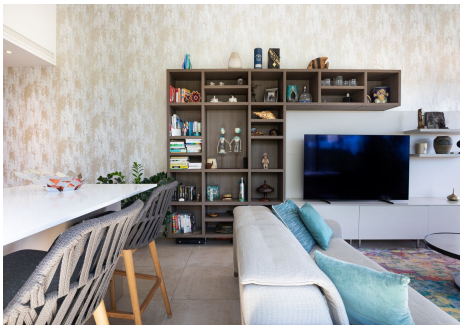
# PROPERTIES silversea

Garden, Pool, Urban. Features : Covered Terrace, Lift, Fitted Wardrobes, Near Transport, Private Terrace, WiFi, Gym, Sauna, Storage Room, Ensuite Bathroom, Barbeque, Double Glazing. Furniture : Optional. Kitchen : Fully Fitted. Garden : Communal, Landscaped. Security : Gated Complex, Entry Phone. Parking : Underground, More Than One. Category : Golf, Holiday Homes, Investment, Luxury, Reduced, Resale, Contemporary.





PROPERTIES  
silversea









PROPERTIES  
silversea

