



SEMI-DETACHED HOUSE 4 BEDROOMS 4 BATHROOMS IN TORREQUEBRADA

Torrequebrada

REF# R4662400 – 845.000€

4
Beds

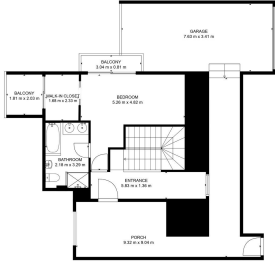
4
Baths

298 m²
Built

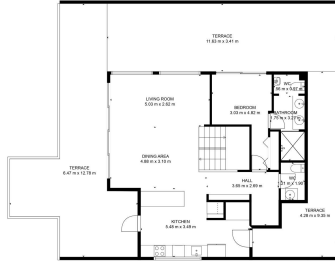
Nestled in the exclusive enclave of Big Blue Villas in Benalmádena, this exquisite three-level villa represents coastal luxury living at its finest. Inspired by modern architectural design and perfectly positioned close to the beach along the Mediterranean coast, this residence offers an unparalleled fusion of sophistication and functionality. Enter the expansive entranceway, where sleek lines and abundant natural light set the tone for the elegant interiors. The villa has been meticulously designed to include four spacious bedrooms, four bathrooms, and an additional guest toilet, spread across its three levels. An exceptional living area on the ground floor boasts an impressively designed bar area, ideal for gatherings with friends. Indulge in leisure and relaxation amidst the impeccably landscaped community gardens, take a refreshing dip in the sparkling communal pool, or stay active in the state-of-the-art gymnasium and social room areas. The villa also features a barbecue area ideal for outdoor dining, as well as outside sitting areas, various terraces, and a private parking carport. Enjoy breathtaking views of the sea while dining outdoors, accessed conveniently from the kitchen, providing a seamless transition to the outside dining area. With easy access to the beach and nearby amenities, residents can seamlessly navigate their surroundings. Experience the essence of coastal living at Big Blue Villas—a sanctuary where every detail has been meticulously designed to offer a lifestyle of unparalleled luxury and refinement.



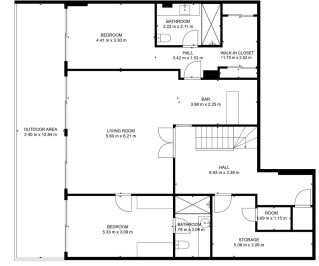




TOTAL: 80.00 m²
GROSS AREA: 114.00 m² (including terrace, porch, balcony, parking, and garage)
BUILDING: 114.00 m² (including terrace, porch, balcony, parking, and garage)
BALCONY: 3.00 m², TERRACE: 3.50 m², PORCH: 3.50 m², PARKING: 10.00 m², GARAGE: 7.00 m²



TOTAL: 80.00 m²
GROSS AREA: 114.00 m² (including terrace, porch, balcony, parking, and garage)
BUILDING: 114.00 m² (including terrace, porch, balcony, parking, and garage)
BALCONY: 3.00 m², TERRACE: 3.50 m², PORCH: 3.50 m², PARKING: 10.00 m², GARAGE: 7.00 m²



TOTAL: 80.00 m²
GROSS AREA: 114.00 m² (including terrace, porch, balcony, parking, and garage)
BUILDING: 114.00 m² (including terrace, porch, balcony, parking, and garage)
BALCONY: 3.00 m², TERRACE: 3.50 m², PORCH: 3.50 m², PARKING: 10.00 m², GARAGE: 7.00 m²