



## PENTHOUSE DUPLEX 3 BEDROOMS 3 BATHROOMS IN BENALMADENA COSTA

Benalmadena Costa

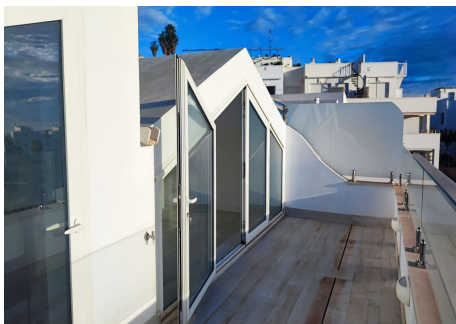
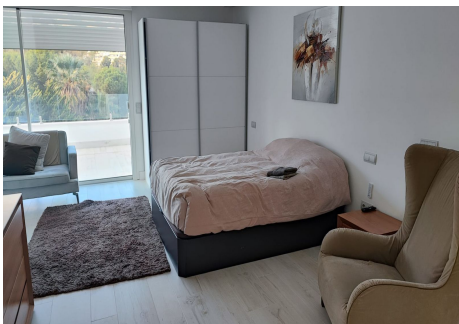
REF# R4615015 – 1.400.000€

3	3	180 m <sup>2</sup>	40 m <sup>2</sup>
Beds	Baths	Built	Terrace

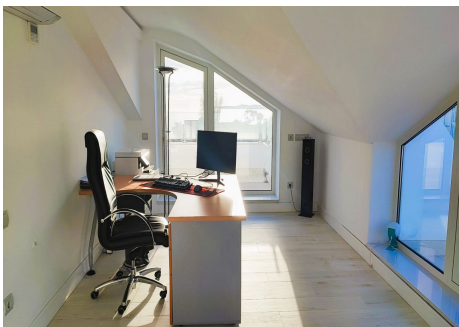
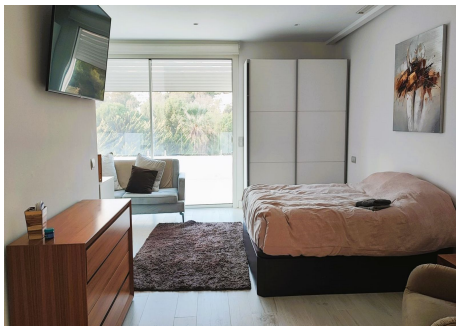
Spectacular Luxury Duplex Penthouse 20 Meters from the Beach in Benalmádena Costa Immerse yourself in luxury with this stunning duplex penthouse located in Benalmádena Costa, just 20 meters from the beach. This exclusive residence is part of a community of only 6 properties and boasts over 3,600 m<sup>2</sup> of communal areas. Enjoy an exceptional lifestyle with 2 bedrooms, an office, 3 bathrooms, a guest toilet, and a generous built area of 180 m<sup>2</sup>. Key Features: Exceptional Location: Situated steps from the beach, this duplex penthouse is nestled in a prestigious residential area, offering the perfect blend of tranquillity and access to the coastline. Modern and Bright Design: The beautiful, luminous living room features a modern, fully equipped open-plan kitchen, creating a contemporary space for daily enjoyment. Terraces with Stunning Views: Two spacious terraces offer panoramic views of the sea and mountains, providing a perfect setting for outdoor entertainment and relaxation. High-Quality Construction: The residence has been built with high-quality materials, offering a combination of elegance and durability. Luxury Amenities: Includes air conditioning (hot/cold), internal and external elevators, two parking spaces in the underground garage, and a storage room. Exceptional Common Areas: Enjoy the pool and lush gardens in the communal area, creating an oasis of relaxation. Technical Details: Built Area: 180 m<sup>2</sup> Terrace: 40 m<sup>2</sup> Bedrooms: 3 Bathrooms: 3 Extras and Services: Fully furnished with luxury furniture. Kitchen equipped with

# PROPERTIES silversea

high-end appliances. Underfloor heating in bathrooms. Home automation and double glazing. Electric blinds and intercom for added security. Public services: electricity, drinkable water, telephone. Category: This property is categorized as beachfront, luxury, and contemporary, offering a unique opportunity for those seeking an exclusive lifestyle on the Costa del Sol. Available for Long-Term Rental: This duplex penthouse is also available for long-term rental, providing flexibility and convenience.



PROPERTIES  
silversea



PROPERTIES  
silversea

