



MIDDLE FLOOR APARTMENT 3 BEDROOMS 2 BATHROOMS IN BENALMADENA PUEBLO

Benalmadena Pueblo

REF# R4554946 – 995.000€

3
Beds

2
Baths

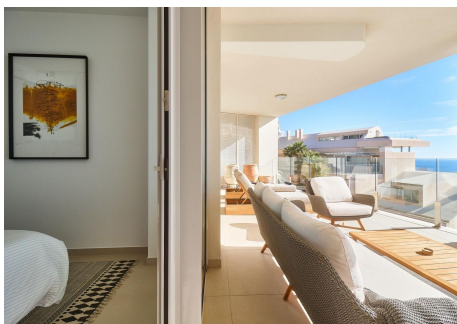
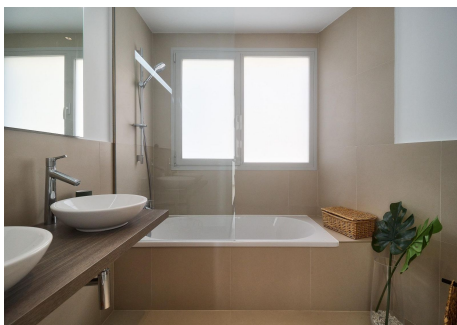
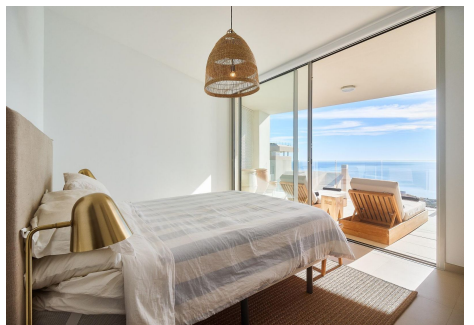
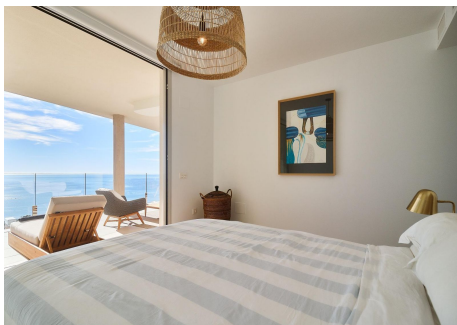
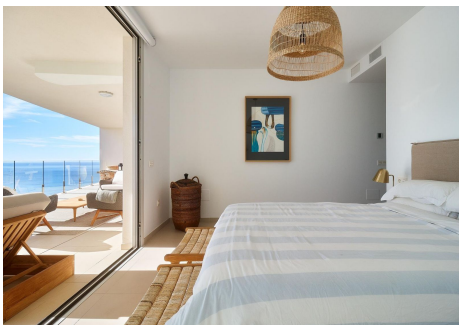
173 m²
Built

49 m²
Terrace

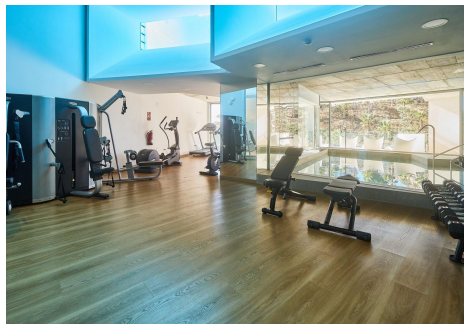
Are you looking for unique views of the sea? You will fall in love with this apartment for the panoramic views it offers from a 50m² terrace.. We are located in the recently built Stupa Hills residential area, in a location between Carvajal and Benalmadena with services next door such as supermarkets, shops and international restaurants.. . This apartment is an opportunity due to its location within the residential complex, being on the corner and with a terrace twice the size of other units. Being on the corner and in the upper phase, it has a lot of privacy and a guarantee of panoramic and infinite views for life.. The apartment is distributed in a beautiful kitchen open to the living room, with finishes and appliances of the highest quality. With an exit to the large terrace with a designer barbecue installed where you can enjoy the quality of life that the coast offers you. We continue with 3 double rooms, two of them with direct access to the large terrace and ensuite bathroom. Waking up with the feeling that you are on a boat brightens anyone's day. All bedrooms have built-in wardrobes except the main one which has a dressing room.. . It has 2 parking spaces and a storage room.. . The residential has 2 outdoor pools, one indoor, SPA, gym and co-working area. On site consierge and security. A bonus is that by belonging to the Higuera brand, you can enjoy the premium services they offer, such as the use of their sports club and several restaurants.. . Do you want a luxury apartment, in a recent residential area, with an unbeatable location and unique sea views? Contact us and

PROPERTIES
silversea

visit this beautiful apartment..



PROPERTIES
silversea



PROPERTIES
silversea

