



PENTHOUSE DUPLEX 3 BEDROOMS 3 BATHROOMS IN NUEVA ANDALUCÍA

Nueva Andalucía

REF# R4505344 – 1.189.000€

3
Beds

3
Baths

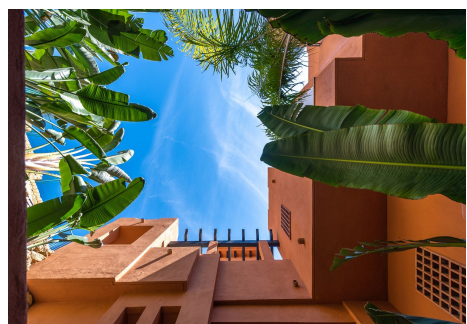
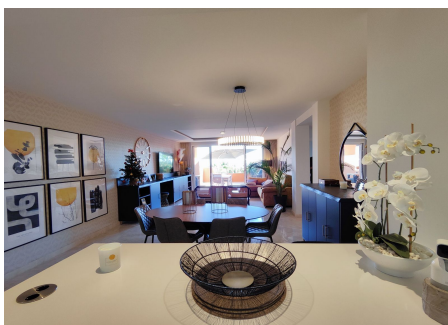
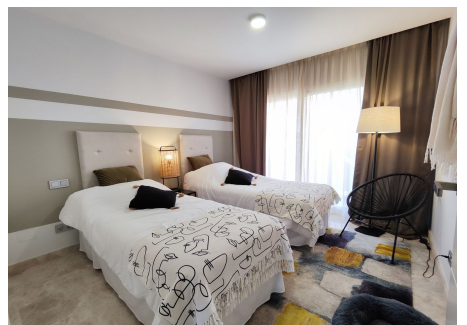
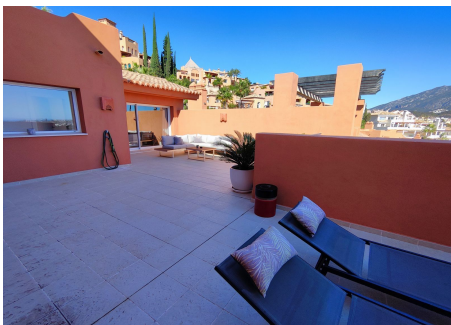
288 m²
Built

83 m²
Terrace

Luxury duplex penthouse with incredible views of La Concha and the sea, in a superb complex located in the heart of Marbella's Golf Valley and just 5 minutes from Puerto Banús. Beautiful communal areas with tropical gardens, waterfalls, lagoon-style swimming pool and small blocks of flats in Arab/Andalusian style. On the ground floor you will find a superb open-plan living area: kitchen with loggia, dining room, lounge opening onto a beautiful terrace, 2 bedrooms with their own bathrooms, on the first floor, a superb master bedroom with dressing and bathroom with access to a large terrace. This top-floor flat has been beautifully finished and offers superb interior and exterior space. This penthouse comes with 2 private parking spaces in basement and 1 storage. Bedrooms: 3 | Bathroom: 3 | Interior surface area: 133m² | Terraces: 83m² | Swimming pool: communal | Orientation: S/SE | Year of construction: 2018 | 2 parking spaces and a storage in secure basement Airport: 40 min drive - San Pedro: 5 min drive - Marbella: 8 min drive - Puerto Banús: 5 min drive - Golf: 2 min drive - Beach: 5 min drive - Restaurants/bars: on 3 min drive - Shops: 3 min drive - Public transport: 3 min drive The property market on the Costa del Sol has regained its dynamism and quality properties are selling faster. We recommend that if you see properties on our website that are within your budget, you contact us immediately. Our teams are constantly working to ensure that the descriptions and advertised prices of the properties on this web page are correct and up to

PROPERTIES silversea

date. However, the information contained on this web page is subject to possible errors and/or omissions and some of the properties may have changed price, or been previously sold or withdrawn from sale.



PROPERTIES
silversea

