



PENTHOUSE DUPLEX 4 BEDROOMS 4 BATHROOMS IN ESTEPONA

Estepona

REF# R4376146 – 3.850.000€

4
Beds

4
Baths

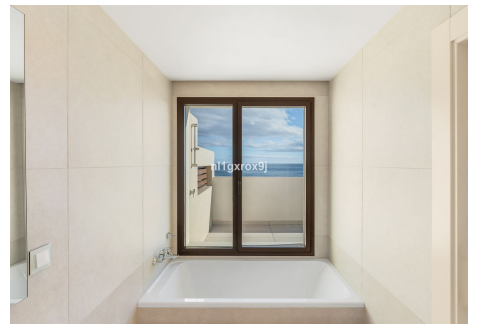
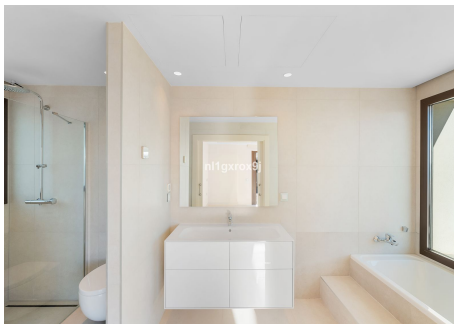
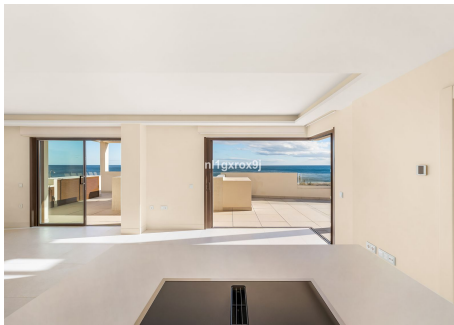
262 m²
Built

87 m²
Terrace

For those looking to live in the Costa del Sol, this is the perfect place. The development—which sits close to a number of small picturesque villages—benefits from an unparalleled beachfront location and enjoys, among others, a wide cultural, gastronomic and sports offering. The project has been developed to meet all needs and for you to enjoy a beach-chic lifestyle, luxuriating in nature's bounty, and finding the peace and quiet, and relaxation you are looking for. This penthouse is one of the first line beach-front 6 exclusive and light-filled penthouses boasting over 349 m² with 3 bedrooms, 1 study room and splendid views over the Costa del Sol and Mediterranean coast. On the upper floor you will find the master bedroom and a large terrace, while the main floor comprises two bedrooms with dressing rooms and en-suite bathrooms, a guest toilet, an office, a fully equipped state of the art kitchen, a large living room, a utility room and spacious terraces with a plunge pool. The penthouse also has 2 dedicated closed parking spaces and a large storage room. The penthouse is perfect for those seeking to enjoy an oceanfront residence with all the amenities and services within close vicinity. With an area of approximately 15,000 sq m, a novel residential concept, character features and all the facilities you need, the urbanization is poised to become the most exclusive coastal development in Costa del Sol with its heated lap pool, kids pool, tennis court, padel court, kids playground and barbecue area. Built with the best materials and 100% committed to the environment,

PROPERTIES silversea

the urbanization strives for the BREEAM® certificate, promoting a more sustainable construction that has economic, environmental and social benefits for all people linked to the life of the residential complex.



PROPERTIES
silversea

