



## HOUSE 4 BEDROOMS 4.5 BATHROOMS IN EL PARAISO

El Paraiso

REF# R4370965 – 1.999.950€

4  
Beds

4.5  
Baths

338 m<sup>2</sup>  
Built

3192 m<sup>2</sup>  
Plot

146 m<sup>2</sup>  
Terrace

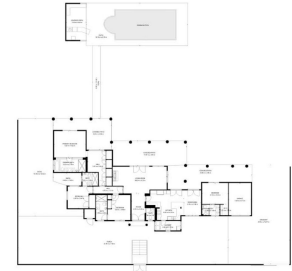
This charming villa, inspired by the Andalusian style, rests gracefully on a sprawling flat plot in El Paraiso Medio, conveniently close to a plethora of dining and shopping options. A mere 10-15 minutes stroll leads to the sun-kissed beaches and the esteemed El Paraiso golf club. Despite its proximity to amenities, the villa boasts serene seclusion within its expansive grounds. Embracing single-level living, this family residence has undergone refurbishments over the years, featuring updated floors, carpentry, electrical, and plumbing systems. Impeccably maintained, it beckons for immediate occupancy. The sunlit interiors predominantly face south, with generous windows and French doors seamlessly connecting indoor spaces to the inviting terraces, fostering a quintessentially Spanish indoor-outdoor lifestyle. The capacious kitchen, complete with a welcoming dining area, stands as a testament to convivial gatherings. The indulgent master suite, accessed through a spacious dressing room, is complemented by a sprawling en-suite bathroom. Two additional guest bedrooms, each with en-suite facilities, occupy this wing, while a separate entrance lends versatility to the fourth bedroom, ideal for guests or staff. Modern comforts abound, including air conditioning, underfloor heating in the bathrooms and kitchen, a cozy fireplace in the living room, and radiators for winter warmth. A garage seamlessly integrated into the property, along with ample parking space for 2-3 cars, adds convenience. The expansive gardens, adorned with fruit trees, host a

# PROPERTIES silversea

sizable swimming pool and a recently added pool house with BBQ facilities and seating areas, perfect for summer soirées. Presenting an ideal family abode in its current state, the property also holds promise for investors, courtesy of its vast plot. Disclaimer: This villa was originally built in the early '80, since then it has been extended and today measures 338 sq.meters built plus terraces of 146 sq.meters although the legal documents shows less.







PROPOSED DEVELOPMENT AREA  
PLAN 1:100 (NOT TO SCALE)  
DATE: 10/10/2019  
PAGE: 001 OF 02