



GROUND FLOOR APARTMENT 2 BEDROOMS 2 BATHROOMS IN LA MAIRENA

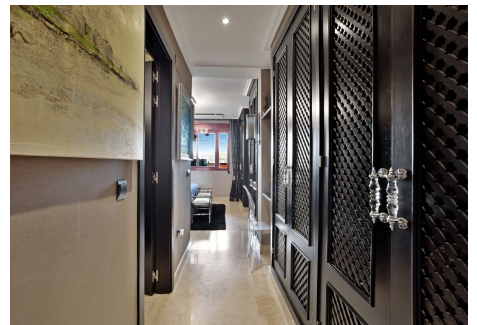
La Mairena

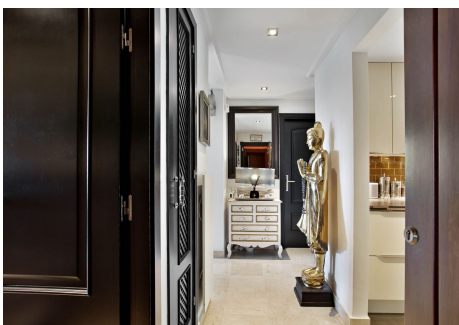
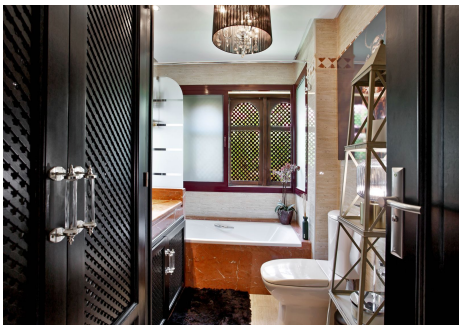
REF# R4094038 – 399.000€

2	2	146 m ²	210 m ²	31 m ²
Beds	Baths	Built	Plot	Terrace

A garden apartment like no other... This exceptional corner flat is so spacious it feels like a villa. The current owners moved here from Dubai and have meticulously designed it and maximised the floor plan to suit their discerning taste and lifestyle. A blend of Eichholtz (The Netherlands) and Dubai furnishings, the space is truly unique and the rooms flow seamlessly creating a sense of continuity and privacy that is hard to find in apartment living and exclusive to El Soto. One of the only four South-facing blocks in all of El Soto, this is the only apartment whose huge south-west wrap-around garden enjoys all-day sun and is completely private. Beautifully landscaped by the owners with artificial grass, white stones, mood lighting and Buddha statues... They have created a stunning escape where you can enjoy the peace and tranquility of mountain living, while just a two-minute walk to the fabulous El Soto Clubhouse. The interior of the apartment has been fully renovated and interior designed by the owners. All the joinery has been painted in a matte black and extra built-in closets have been constructed in the primary bedroom and both bathrooms. The kitchen has been completely refurbished and extended with Neff appliances, a stylish ceramic floor and a floor to ceiling window overlooking the private garden. The living room boasts a spectacular coffered ceiling that gives the space height and grandeur. The second bedroom comfortably fits a King-sized bed (180cm), fitted closet and an additional closet. The second bathroom houses two full sized Bosch Washer

and Dryer freeing up more storage space in the kitchen. The two terraces have been enclosed with glass curtains and the floor has been fitted with the same marble flooring as the rest of the property and both terraces have been fitted with air conditioning units so they do not feel like terraces but additional rooms. The larger terrace is being used as the dining room and the smaller terrace as a second office since the owners largely work from home. The entire apartment has been fitted with UV heating panels that can be controlled via individual wall-mounted thermostats or via an app. The 150 litre boiler was recently installed in 2021 and is energy efficient. A new Daikin central air conditioning system was purchased and installed in 2020. There are Ring cameras set up throughout the interior and exterior of the apartment. There is an alarm system installed with a current contract with Sector Alarm. There are Sonos surround sound speakers connected throughout the apartment and the entire home's lighting, heating panels, electric blinds can be controlled via a smart app. There is one underground parking space complete with Electric charging point. The apartment also comes with a larger than normal storage room opposite the parking space that the owners have ventilated and treated for damp and fitted with shelves. All in all, this is a spectacular home where every single detail has been thought of and every need catered to.





PROPERTIES
silversea

